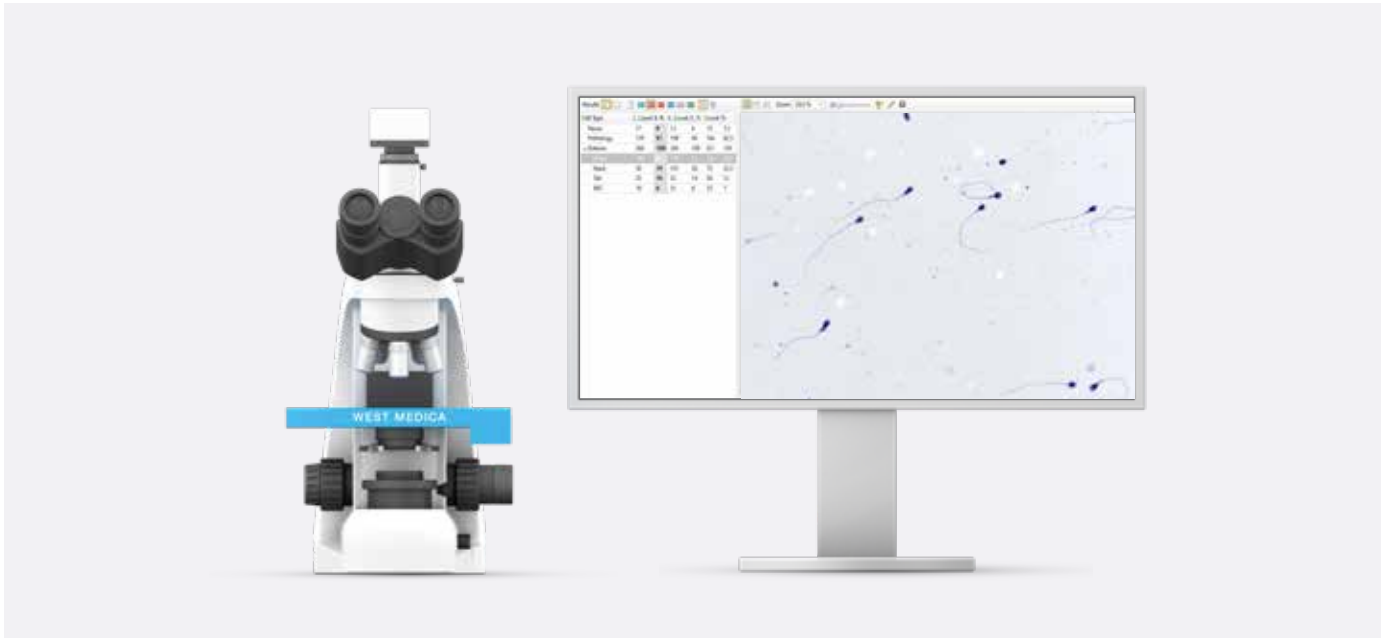


Vision Assist



Key features

- Loading 1 or 4 slides
- Automatic sample scanning
- Automatic analysis and pre-classification
- For small and medium-sized laboratories

Scanning process



01

Place the slide to the microscope



02

Start scanning



03

Get the result!

Vision Pro



Key features

- Loading 4 or 8 slides
- Automatic sample scanning
- Automatic analysis and classification
- Random access
- For medium and large laboratories

Scanning process



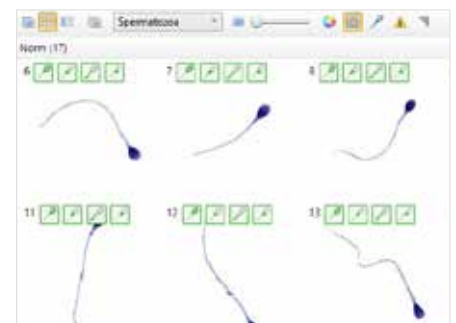
01

Load slides into cassette tape



02

Start scanning



03

Get the result!

Vision Sperm

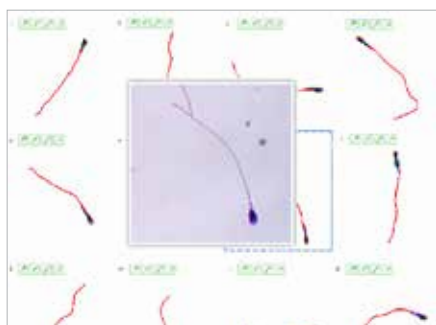
Automatic sperm analysis (CASA)



Semen analysis according to WHO 4th, 5th or 6th edition requirements

- Mobility / concentration
- DNA fragmentation
- Morphology
- Leukocytes
- Vitality
- Acrosome reaction

View sperm gallery



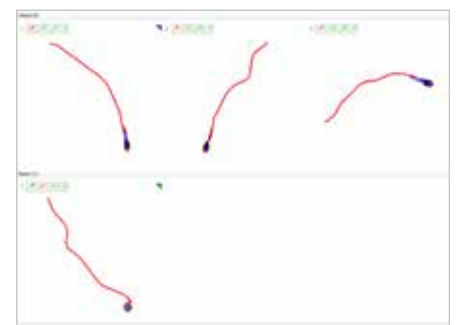
Quick view

Increasing the cell size allows a quick evaluation of the morphology of the object



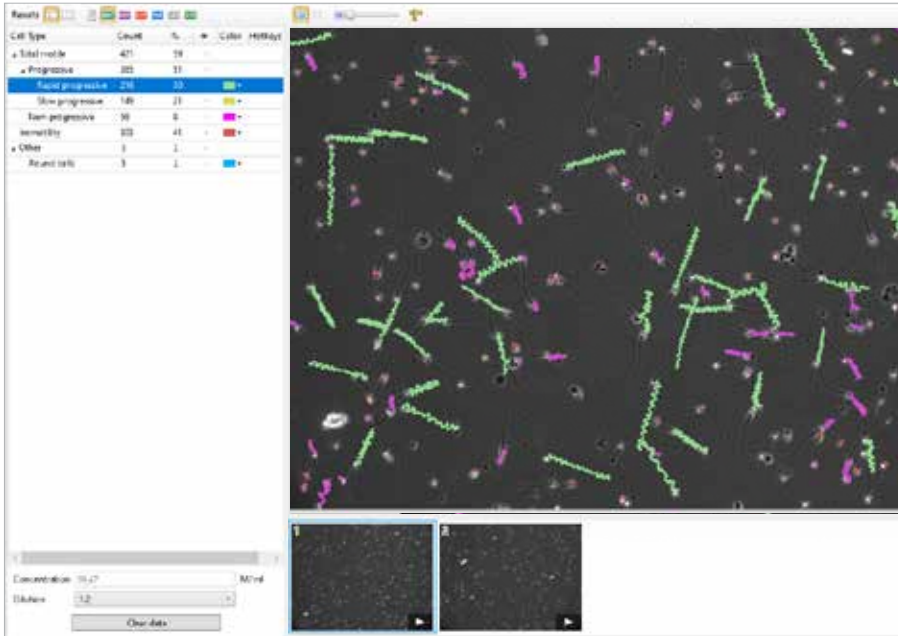
Tooltips

When you hover over a cell, a tooltip pops up with additional information about the object



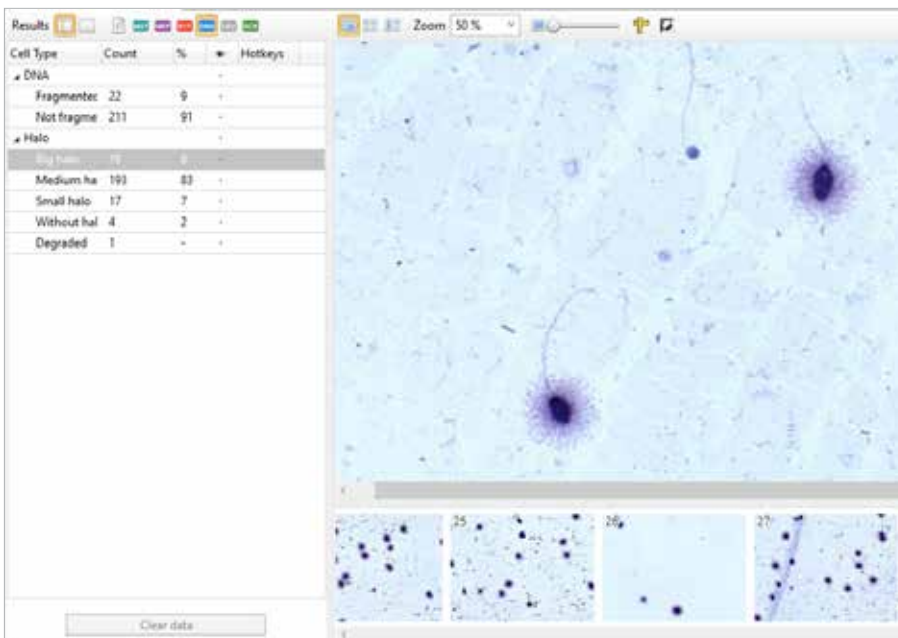
Group selection

Displays only tagged cell images



MOT Mobility / concentration

Mobility analysis and concentration determination. Motility — the trajectory of sperm in the field of view for a given time. Concentration — total sperm count, taking into account sample thickness and dilution. Calculation of round cell concentration

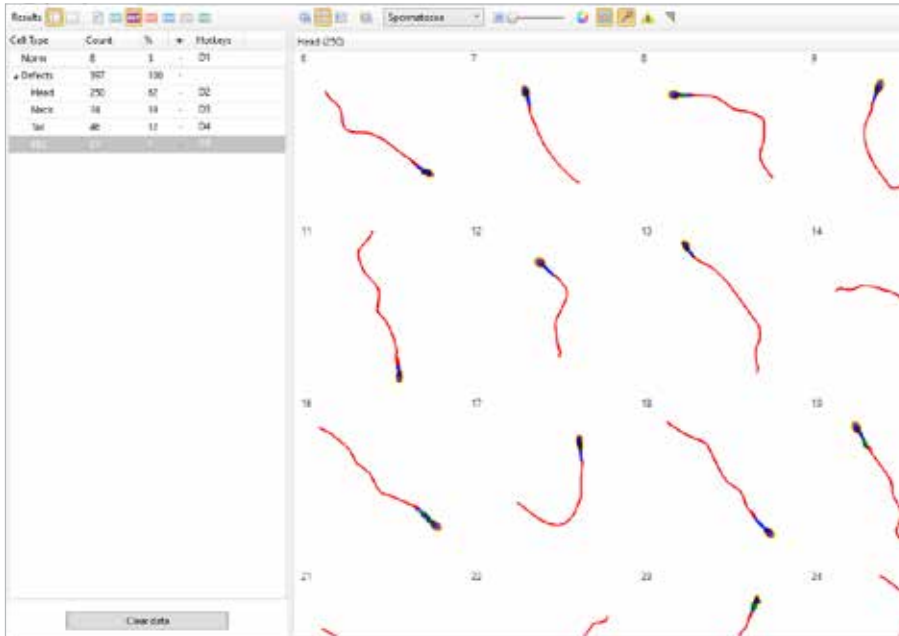


DNA DNA fragmentation

Pre-classification by degree of DNA fragmentation. Determines the ratio of fragmented sperm relative to healthy

Vision Sperm

Automatic sperm analysis (CASA)



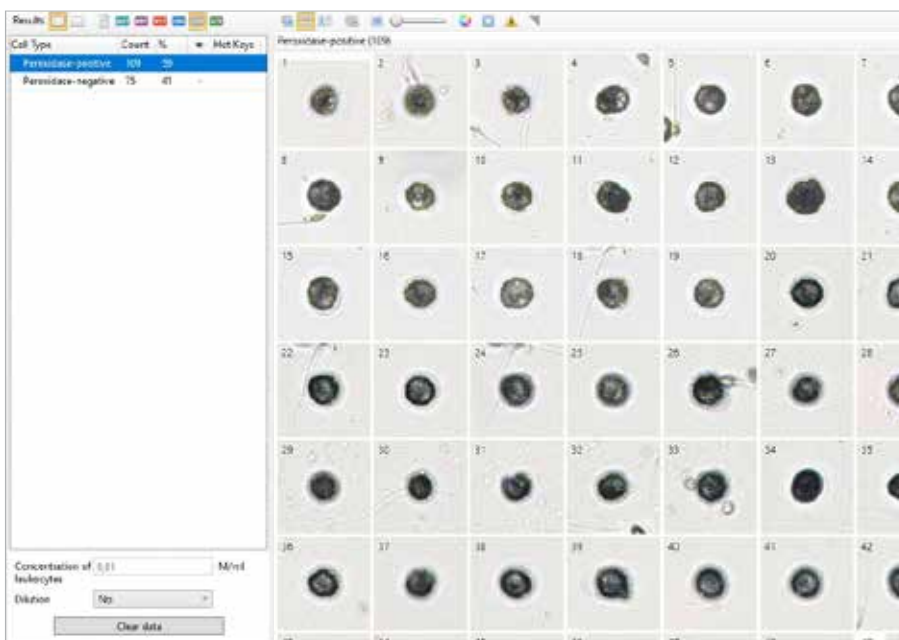
MRF

Morphology

Sperm analysis for morphology analysis.

Defect types:

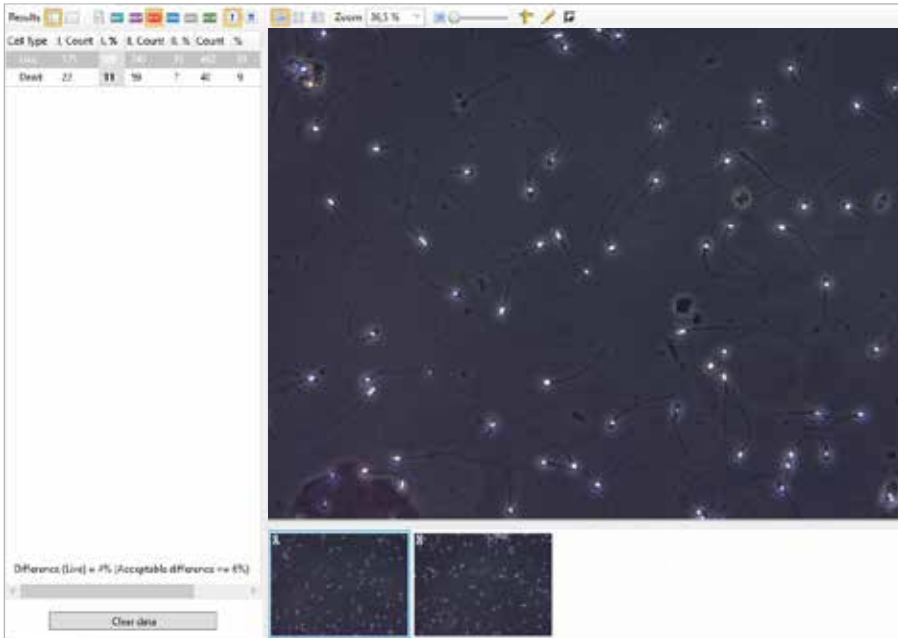
- Heads
- Neck
- Flagellum
- ERC



LEU

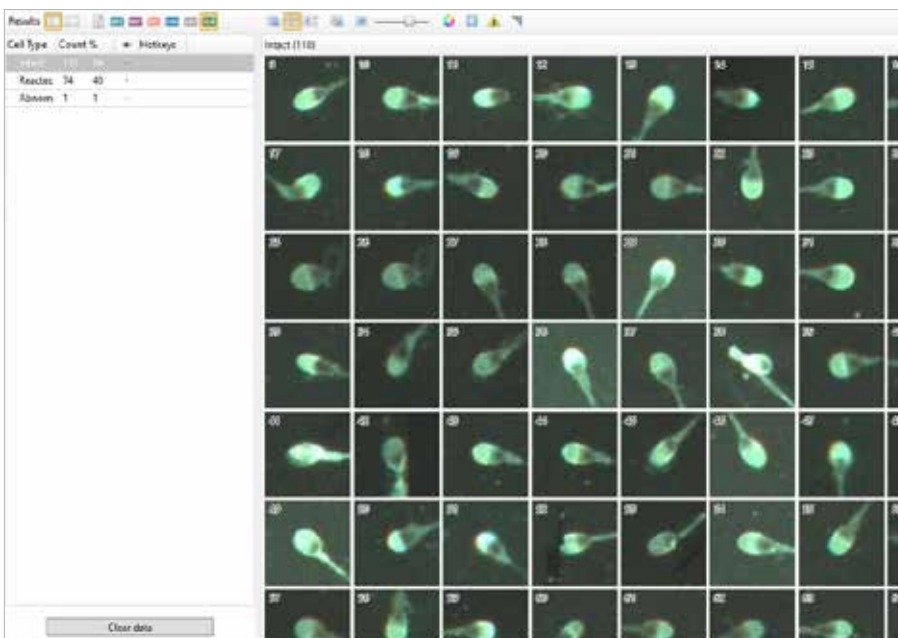
Leukocytes

Leukocyte content in semen



VIT Vitality

Pre-classification of sperm vitality, calculation of the percentage of «living» and «dead»



ACR Acrosome reaction

Acrosome reaction test of sperm

Digital scanning analyzers

Key features	Vision Assist	Vision Pro
Application modules	Vision Sperm	Vision Sperm*
Working mode	Queue (for 4 slides only)	Queue, random access
Scanning	Automatic	Automatic
Loading a slide	1 or 4 slides	4 or 8 slides
Specifications	Scanning microscope Personal computer Monitor	Scanning microscope Personal computer Monitor
Objectives	20x, 40x, 50x Oil, 100x Oil	20x, 40x, 60x Oil
Research method	Brightfield, phase contrast, fluorescence	Brightfield, phase contrast
Illumination	Köhler illumination, LED	Köhler illumination, LED
Communications	Bidirectional connection to LIS, LIS2-A2 (ASTM), HL7	Bidirectional connection to LIS, LIS2-A2 (ASTM), HL7

* Only for MOT, MRF, DNA, VIT and LEU methods

Pre-classification has to be validated by the specialist reviewing the galleries of cells.

Please check the intended use and the registration in your local regulation.

Depending on the regulations of the respective region, some products may be used for research purpose only.

We reserve the right to change specification without notice.



West Medica Produktions- und Handels-GmbH
Brown-Boveri-Straße 6, B17-1
2351 Wiener Neudorf, Austria
tel.: +43 (0) 2236 892465, fax: +43 (0) 2236 892464
vienna@westmedica.com, www.wm-vision.com

Official Distributor